

Reservoir Access Staircase

In 2015, Treadwell was contracted to carry out supply for works for the replacement of the entire roof over the water supply to ensure that it is completely water proof to prevent contamination of the potable water supply. The works also included the installation of access stairs into the reservoir to improve safe access. This was particularly important for when a polyethylene liner is installed in the future.

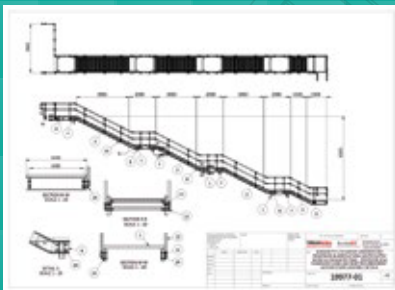
PROJECT INFORMATION

Project Category:	Water storage facility
Scope of Work:	Improvising access to base of reservoir
Treadwell Products:	GratEX® FRP Grating RailEX® ROUND Premium FRP Handrail ArchitEX™ Structural Profiles
Value:	\$30,000

Project Challenges

- A major challenge was to provide proper safe access to inlet pipes and outlet pits for regular maintenance.
- As the structure would be submerged for long periods of time, the issue of corrosion was a critical one.

Treadwell Solution:



1

Extremely durable ACCESS SYSTEMS® range (GratEX® Square Grating and RailEX® ROUND Handrail) engineered and manufactured to comply to AS1657-2013.

2

The comprehensive range of ArchitEX™ Structural Sections allowed for efficient design providing a lightweight structure making installation straightforward.

3

FRP is simply fabricated and modified on site. This means there is no need for any hot works permit.

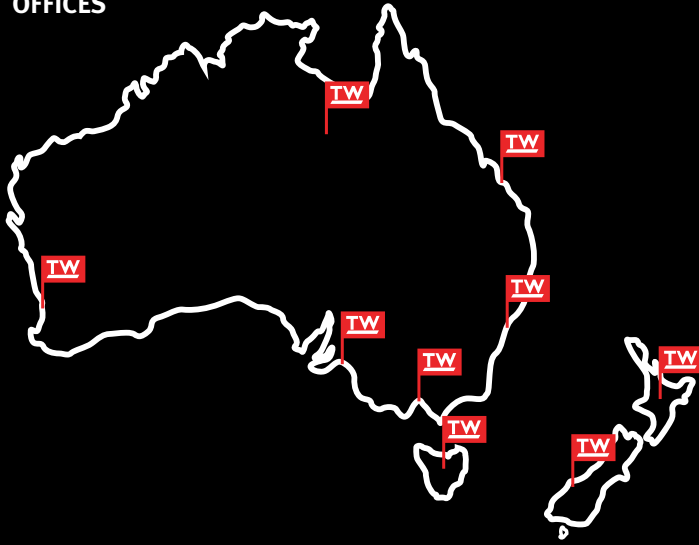
4

Being lightweight and easy to install, FRP is very manageable during construction.

5

Given the nature of FRP, any system utilising it is virtually maintenance free, thus keeping maintenance costs as low as possible

OFFICES



ABOUT TREADWELL

At Treadwell Group, our core business divisions have been developed utilising the latest fibreglass reinforced plastic (FRP) technology. With constant innovation and evolution of our offerings, we grow in competence with each experience in delivering unparalleled solutions to a diversified index of industries which include the water and wastewater, mining, oil and gas, public infrastructure, marine sectors. The progression of our products has been focused on ensuring extended design life in varied applications, enabling us to support our continuing commitment to satisfy and add value to our client's endeavours.

Australia

SOUTH AUSTRALIA

▶ **ADELAIDE (HEAD OFFICE & WAREHOUSE)**

58 DEEDS ROAD
NORTH PLYMPTON, SA 5037

▶ **STRATHALBYN (FACTORY & WAREHOUSE)**

22 DUNREATH ROAD
STRATHALBYN, SA 5255

NEW SOUTH WALES

▶ **SYDNEY (DISTRIBUTION CENTRE)**

2 COAL PIER ROAD
BANKSMEADOW, NSW 2109

▶ **SYDNEY (OFFICE)**

LEVEL 6, 10 HERB ELLIOT AVENUE
SYDNEY OLYMPIC PARK, NSW 2127

▶ **WAGGA(OFFICE)**

BALL PL
EAST WAGGA WAGGA, NSW 2650

VICTORIA

▶ **MELBOURNE (DISTRIBUTION CENTRE)**

107 GATEWAY BOULEVARD
EPPING, VIC 3076

QUEENSLAND

▶ **BRISBANE (DISTRIBUTION CENTRE)**

4 HOWARD SMITH DRIVE
PORT OF BRISBANE, QLD 4178

WESTERN AUSTRALIA

▶ **PERTH (OFFICE & WAREHOUSE)**

4 ELMSFIELD ROAD
MIDVALE, WA 6056

TASMANIA

▶ **BURNIE (DISTRIBUTION CENTRE)**

8 RIVER ROAD
WIVENHOE, TAS 7320

New Zealand

NORTH ISLAND

▶ **AUCKLAND (OFFICE)**

40 ONEHUNGA MALL
ONEHUNGA, AUCKLAND 1061

SOUTH ISLAND

▶ **GREYMOUTH (OFFICE)**

10 CHESTERFIELD STREET, BLAKETOWN
GREYMOUTH 7805

Australia

P 1800 246 800 sales@treadwellgroup.com.au
F 1300 763 521 treadwellgroup.com.au

New Zealand

P 0800 246 600 sales@treadwellgroup.co.nz
F 0800 244 600 treadwellgroup.co.nz