

Research Centre Pump Station

This internationally recognised marine research centre in Tasmania is the hub of a Fisheries and Aquaculture program. Their existing seawater pump station needed to be upgraded to improve the security and capacity of their seawater research. This upgrade will also easily support future expansion of the research facilities.

Treadwell was engaged to engineer, design and supply the handrails, decking, structural profiles and stair treads for the pump station upgrade.

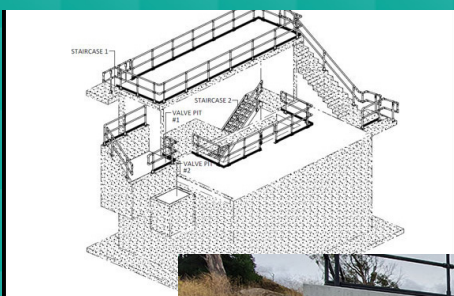
Project Challenges

- Being exposed to outdoor weather conditions, the selected grating had to have an anti-slip surface.
- Metal handrails would get too heated in this outdoor application, the chosen material had to have low thermal conductivity for user safety in extreme temperatures, while remaining robust.
- Non-corrosive stair access was required within the facility.

PROJECT INFORMATION

Project Category:	Infrastructure Upgrades
Scope of Work:	Engineer, design & supply FRP products
Treadwell Products:	ACCESS SYSTEMS GratEX® FRP Square Mesh Grating RailEX® ROUND FRP Handrails ArchitEX™ Structural Profiles

Treadwell Solution:



1

GratEX® FRP Square Mesh grating is constructed with an anti-slip surface to ensure user safety.

2

RailEX® FRP handrails include UV inhibitors and fire-retardant additives, making it ideal for various environments.

3

FRP is naturally non-conductive, making it safe to use even when exposed to extreme temperatures.

4

ArchitEX™ FRP structural profiles were used within the facility along with GratEX® stair treads to ensure durability and long design life.

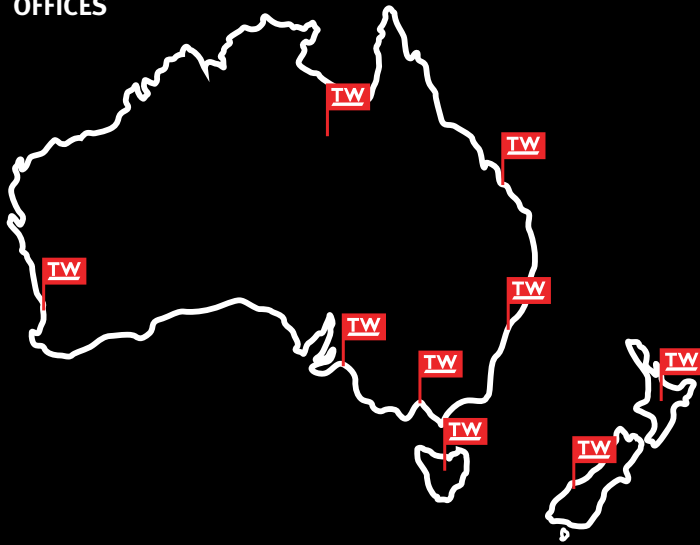
5

FRP is simply fabricated and modified on site. This means there is no need for any hot works permit.

6

Given the nature of FRP, any system utilising it is virtually maintenance free, keeping maintenance costs to a minimum.

OFFICES



ABOUT TREADWELL

At Treadwell Group, our core business divisions have been developed utilising the latest fibreglass reinforced plastic (FRP) technology. With constant innovation and evolution of our offerings, we grow in competence with each experience in delivering unparalleled solutions to a diversified index of industries which include the water and wastewater, mining, oil and gas, public infrastructure, marine sectors. The progression of our products has been focused on ensuring extended design life in varied applications, enabling us to support our continuing commitment to satisfy and add value to our client's endeavours.

Australia

SOUTH AUSTRALIA

▶ **ADELAIDE (HEAD OFFICE & WAREHOUSE)**

58 DEEDS ROAD
NORTH PLYMPTON, SA 5037

▶ **STRATHALBYN (FACTORY & WAREHOUSE)**

22 DUNREATH ROAD
STRATHALBYN, SA 5255

NEW SOUTH WALES

▶ **SYDNEY (DISTRIBUTION CENTRE)**

2 COAL PIER ROAD
BANKSMEADOW, NSW 2109

▶ **SYDNEY (OFFICE)**

LEVEL 6, 10 HERB ELLIOT AVENUE
SYDNEY OLYMPIC PARK, NSW 2127

▶ **WAGGA(OFFICE)**

BALL PL
EAST WAGGA WAGGA, NSW 2650

VICTORIA

▶ **MELBOURNE (DISTRIBUTION CENTRE)**

1 CAILIN PLACE
ALTONA, VIC 3018

QUEENSLAND

▶ **BRISBANE (DISTRIBUTION CENTRE)**

4 HOWARD SMITH DRIVE
PORT OF BRISBANE, QLD 4178

WESTERN AUSTRALIA

▶ **PERTH (OFFICE & WAREHOUSE)**

4 ELMSFIELD ROAD
MIDVALE, WA 6056

TASMANIA

▶ **BURNIE (DISTRIBUTION CENTRE)**

8 RIVER ROAD
WIVENHOE, TAS 7320

New Zealand

NORTH ISLAND

▶ **AUCKLAND (OFFICE)**

40 ONEHUNGA MALL
ONEHUNGA, AUCKLAND 1061

SOUTH ISLAND

▶ **NELSON (OFFICE)**

3 TOKOMARU PLACE, STOKE,
NELSON 7011

Australia

P 1800 246 800 sales@treadwellgroup.com.au
F 1300 763 521 treadwellgroup.com.au

New Zealand

P 0800 246 600 sales@treadwellgroup.co.nz
F 0800 244 600 treadwellgroup.co.nz